



# Big Boy Steam Locomotive

## 1:29 Scale Model

### Prestige Series Locomotive

Museum  
quality  
die-cast  
metal



Sound  
Included  
(Dual Speakers)

#### Big Boy Locomotive Features:

- ★ Highly detailed die-cast metal construction ★ Dual operating smoke stacks
- ★ Digital Sound System with dual speakers in smokebox (one speaker for each set of drivers) ★ DCC Ready
- ★ Start up delay circuit that allows sound and smoke units to activate prior to movement of locomotive
- ★ Operating headlight and cab light ★ Illuminated marker lights
- ★ Hidden front coupler ★ Die-cast drivers with Stainless steel rims ★ Roller bearing drive axles ★ Metal drive rods
- ★ Drawbar coupling between locomotive and tender ★ Highly detailed metal piping ★ Separately cast metal detail parts
- ★ Metal handrails ★ Brass bell ★ Brass whistle ★ Lighted firebox and ash pan glow
- ★ Detailed builders plate ★ Individual wooden shipping box for locomotive and tender
- ★ Overall Length of Big Boy Locomotive & Tender is 57"

#### Big Boy Tender Features:

- ★ Highly detailed die-cast metal construction including detailed coal bin with stoker ★ "Real" coal load
- ★ Operating backup light on tender ★ Illuminated marker lights ★ Separately cast metal parts ★ Opening hatches ★ Operating coupler lift bar





R20040 Union Pacific® Big Boy #4000 with sound



R20041 Union Pacific® Big Boy #4002 with sound



R20042 Union Pacific® Big Boy (On display at Steamtown, Scranton, PA) #4012 with sound

R20043 Union Pacific® Big Boy (On display at Fairplex, Pomona, CA) #4014 with sound

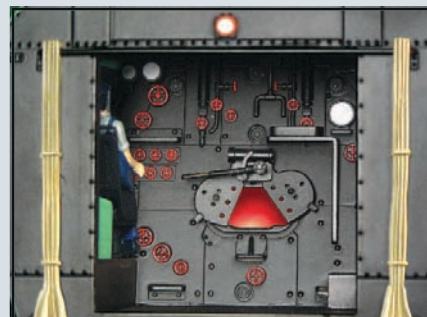


R16506 PFE - SP/UP® Reeper

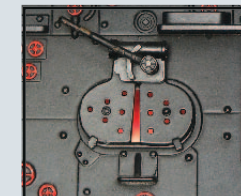
**Matching Rolling Stock**

**Limited Quantities**

- Set of 25 UP/SP Reefers
- R16506A PFE - SP/UP Set of 4 - Set #1
- R16506B PFE - SP/UP Set of 4 - Set #2
- R16506C PFE - SP/UP Set of 4 - Set #3
- R16506D PFE - SP/UP Set of 4 - Set #4
- R16506E PFE - SP/UP Set of 4 - Set #5
- R16506F PFE - SP/UP Set of 4 - Set #6
- R16506 PFE - SP/UP - Single Car
- 25 Different Road Numbers



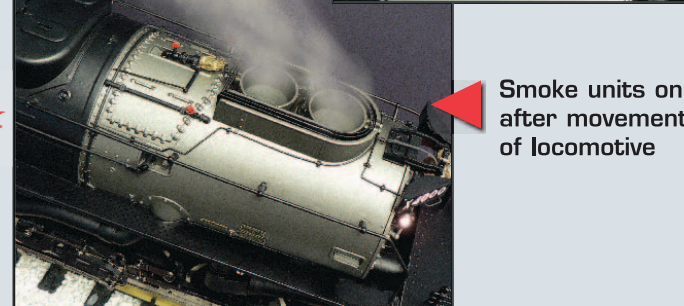
Detailed backhead including lighted firebox glow with opening door



Detailed smoke deflector can be raised/lowered for prototypical operation



Smoke units on prior to movement of locomotive



Smoke units on after movement of locomotive

Motor delay circuitry allows smoke units and sound system to be activated prior to movement of locomotive.